

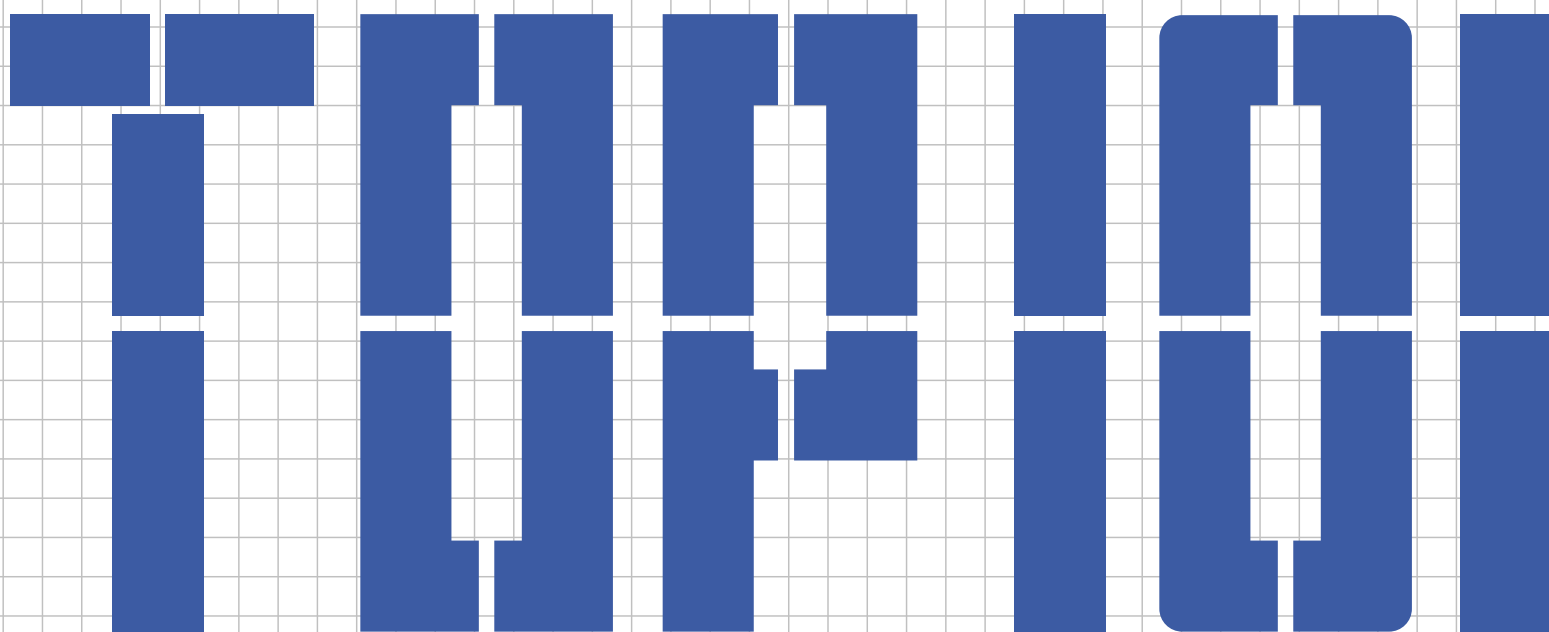
Skin and Facade
表皮与立面

Materials
材料

Structure
结构

Shape
造型

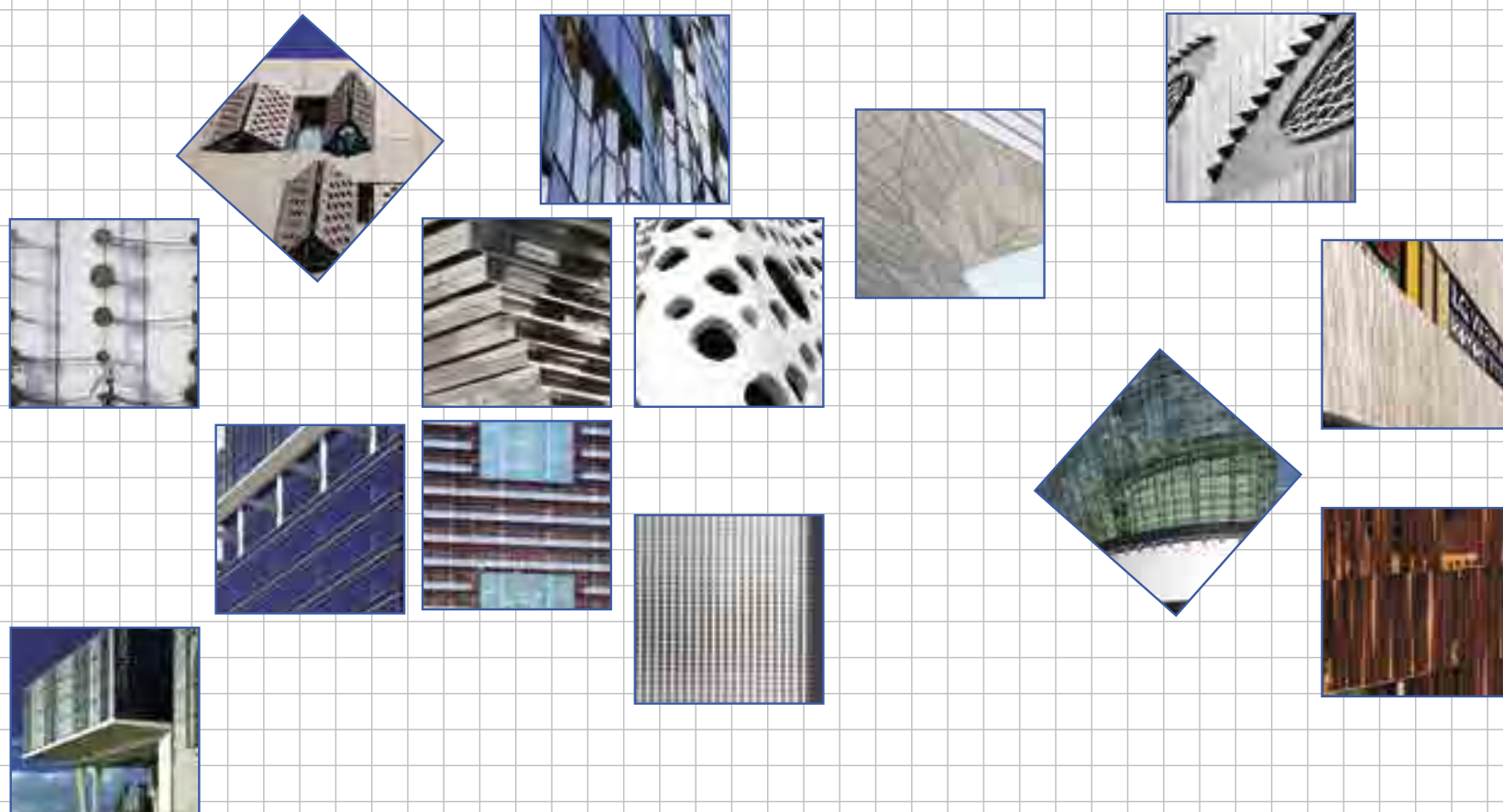
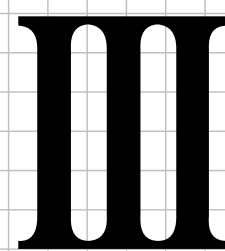
Detail
细部



World's New Buildings

101 世界最佳新建筑

佳图文化 编



中国林业出版社



Location: Milan, Italy
Client: Gruppo Cimbali
Architects: Arkispazio
Head designers: Paolo Balzanelli, Valerio Cometti
Structural Engineering: Francesco Terreni
Built Surface: 1,800 m²
Photography: Arkispazio
项目地点：意大利米兰
客户：Gruppo Cimbali
建筑设计：意大利 Arkispazio 建筑事务所
主设计师：Paolo Balzanelli, Valerio Cometti
结构工程：Francesco Terreni
建成面积：1 800 m²
摄影：Arkispazio

Museum MUMAC Museum of Coffee Machine

MUMAC 咖啡机博物馆

Features 项目亮点

The facades of the museum are covered with strips of metal "red Cimbali", sinuous and enveloping to resemble the waves of hot coffee, which at night filters the artificial light creating a striking illuminated reticle that evokes the energy of MuMAC.

建筑外墙选用红色的带状装饰，象征热咖啡飘动的热气，加上背景光的照射，使其散发出引人注目的光芒。

Overview 项目概况

The MuMAC, Museum of Coffee Machine, was designed by architect Paolo Balzanelli owner of Arkispazio and engineer Valerio Cometti to celebrate the centenary of the Cimbali Group. The Mumac lies in the establishment of the Cimbali Group in Milan, inside the building previously used as a warehouse, within which are located the museum area, an area for temporary exhibitions and dedicated to the culture of coffee.

For visitors to the Mumac, there was created a new entrance through which you can access an area bounded by a coffee-colored fence. The back wall of the fence is marked by nine trees which divide it into 10 equal spaces: ten decades of the century that symbolize life and achievements of Gruppo Cimbali. The opposite side of the building is facing industrial area of the property provides entrance for corporate visitors. The museum area offers an exposition divided into six historical periods from the beginning of the century to the present day: The early years, The age of Rationalism, Invention of the lever, Under the banners of design, The International dimension and The New Millennium.

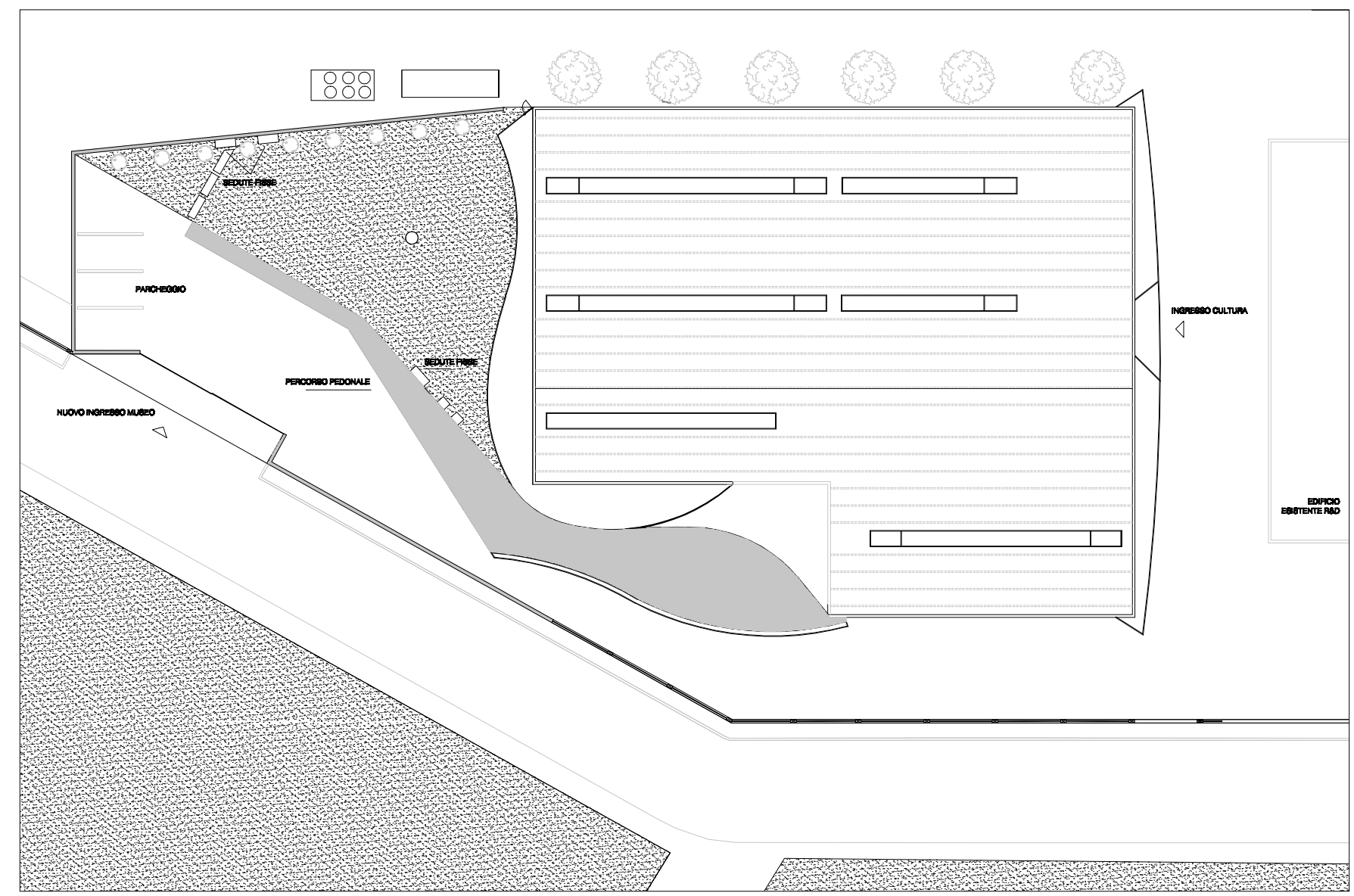
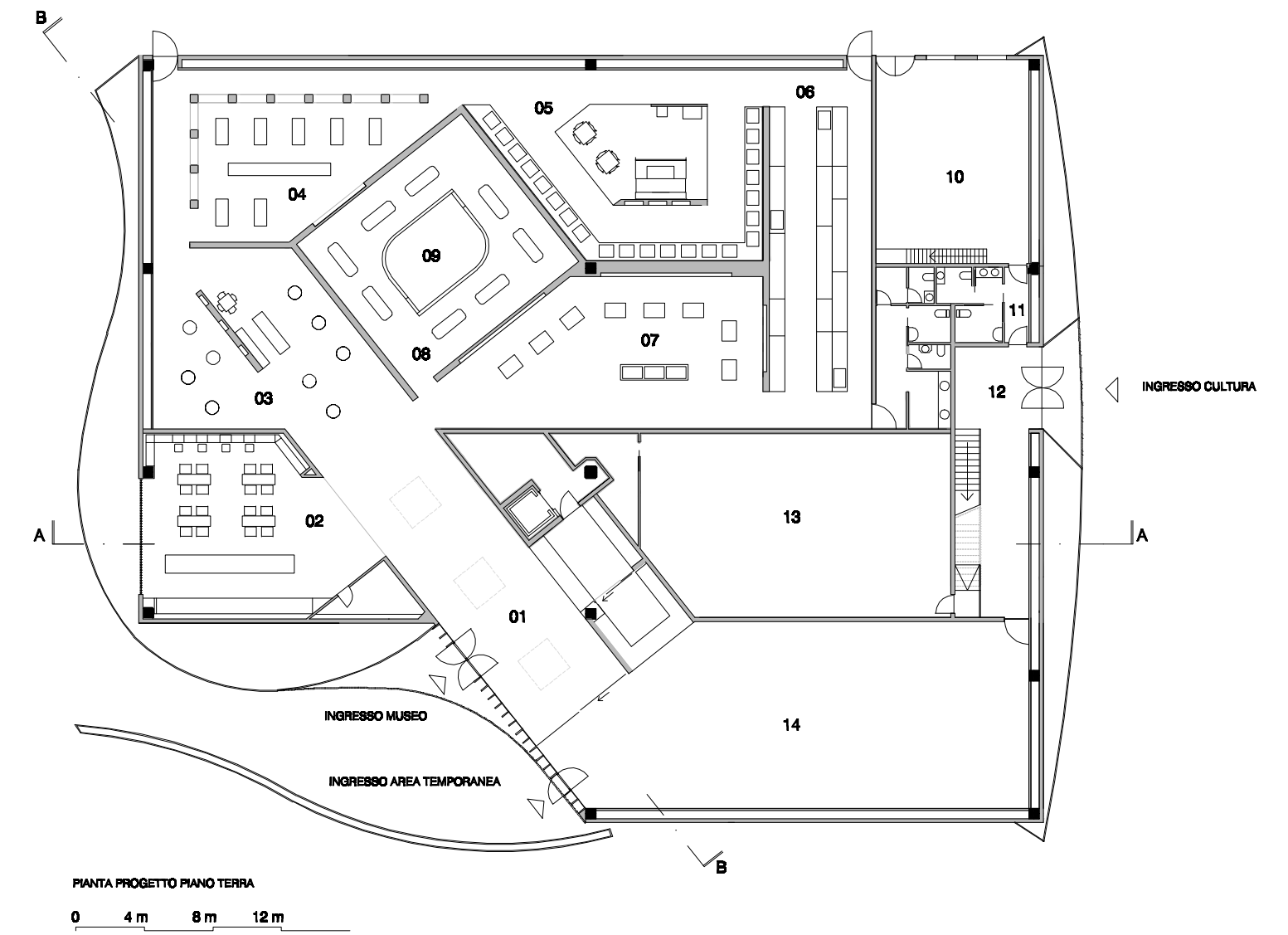
MUMAC 咖啡机博物馆的设计工作由意大利 Arkispazio 建筑师事务所的建筑师 Paolo Balzanelli 和工程师 Valerio Cometti 合作完成。它位于米兰的 Cimbali 集团的仓库区域内，作为一个临时的咖啡文化展厅。

展厅内部根据不同的年代将展区划分成不同的部分，方便游客参观。建筑前面用 9 棵树分成 10 等分，以此来展示一个世纪以来 Cimbali 集团形象的变化，同样内部则分为六个区域（The early years, The age of Rationalism, Invention of the lever, Under the banners of design, The International dimension and The New Millennium），通过他们的咖啡机来展示咖啡的发展史和企业文化。

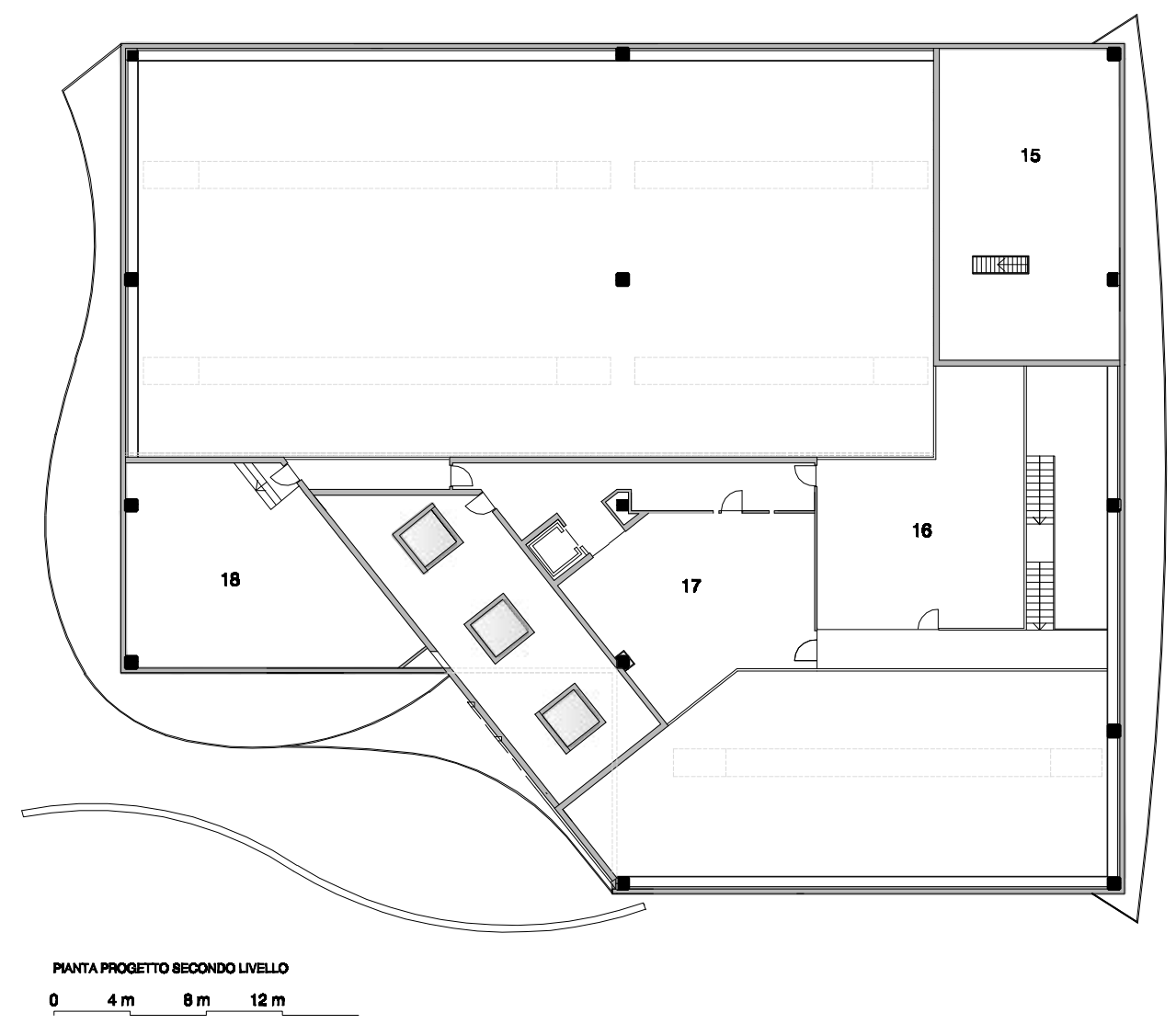


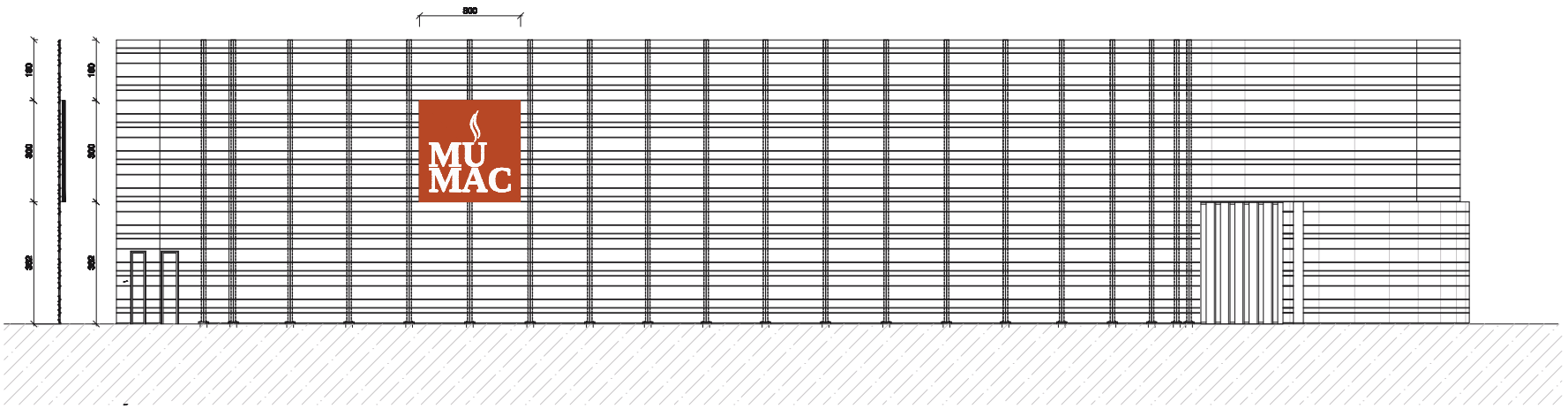
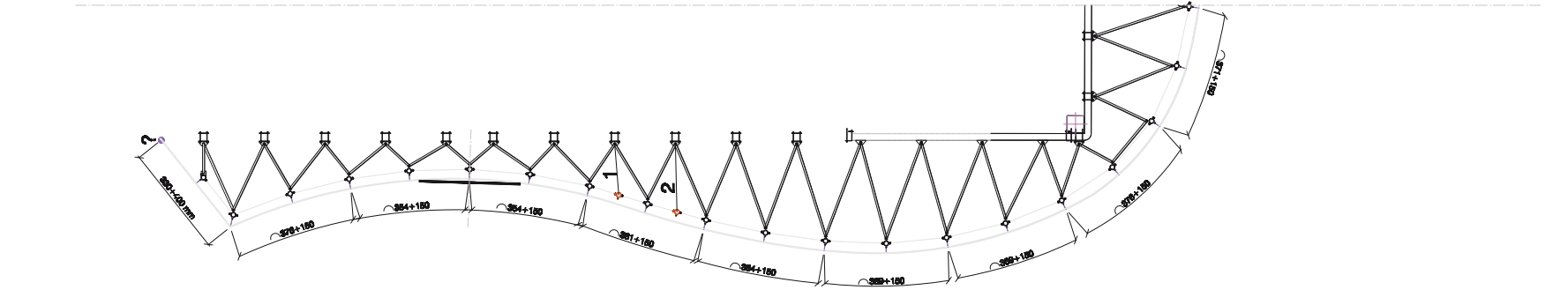
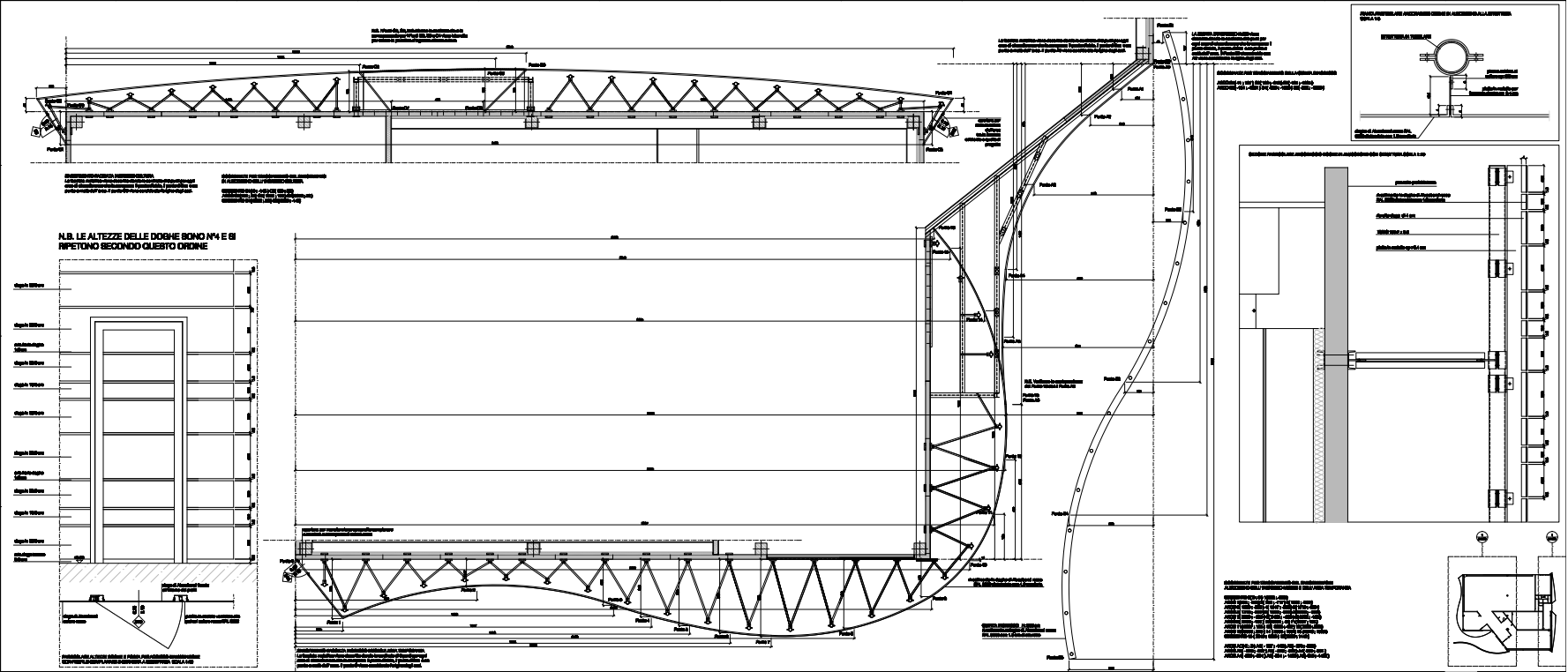


- 01 - INGRESSO / RECEPTION
- 02 - CAFFETTERIA
- 03 - AREA ESPOSITIVA - ALBORI
- 04 - AREA ESPOSITIVA - EPOCA RAZIONALISTA
- 05 - AREA ESPOSITIVA - INVENZIONE DELLA LEVA
- 06 - AREA ESPOSITIVA - SOTTO LE BANDIERE DEL DESIGN
- 07 - AREA ESPOSITIVA - DIMENSIONE INTERNAZIONALE
- 08 - AREA ESPOSITIVA - INGRESSO NEL MILLENNIO
- 09 - SPAZIO PER IL ESPOLOSO
- 10 - MAGAZZINO
- 11 - SERVIZI
- 12 - INGRESSO AREA CULTURA CAFFE
- 13 - SALA TRAINING
- 14 - AREA TEMPORANEA

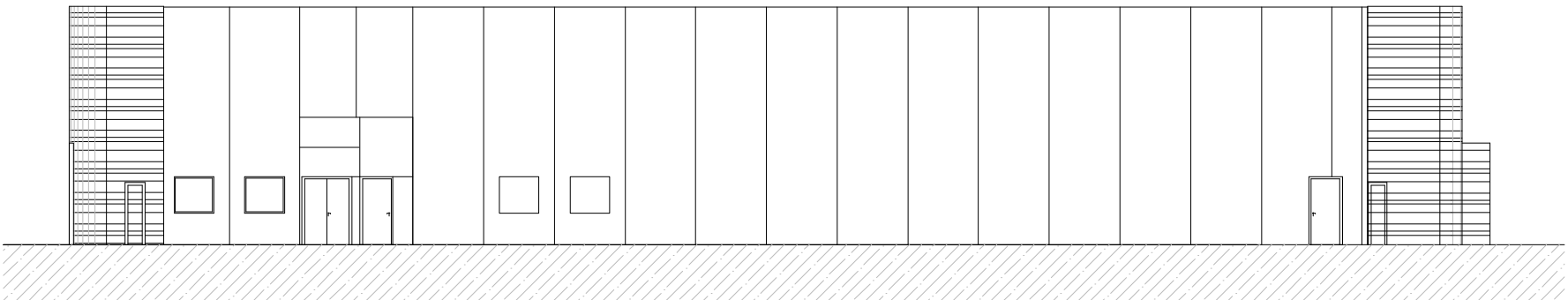


- 15 - LOCALE TECNICO
- 16 - SALA CONFERENZE
- 17 - SALA DEGUSTAZIONI
- 18 - LOCALE TECNICO

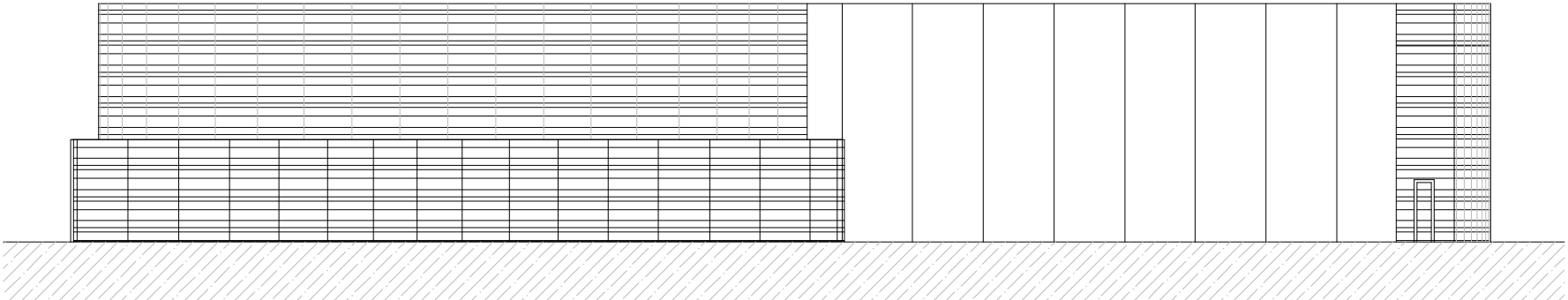




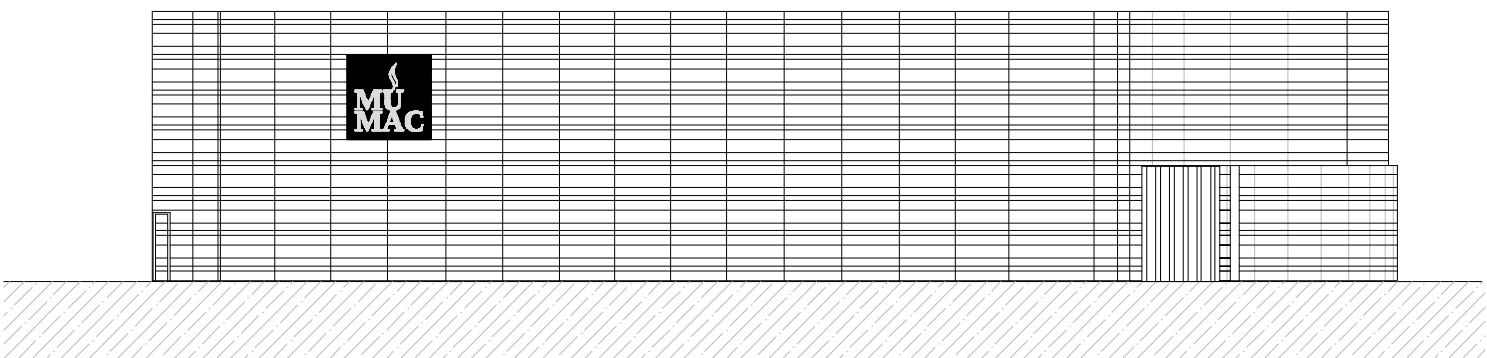
PROSPETTO NORD



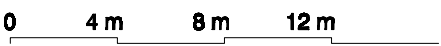
PROSPETTO OVEST



PROSPETTO EST



PROSPETTO SUD





Skin and Materials 表皮与材料

MuMAC tells 100 years of the history of objects that find home within its 1,800 square meters, besides museum there is an area dedicated to the "world of coffee" and an area for temporary exhibitions. The facades of the museum are covered with strips of metal "red Cimbali", sinuous and enveloping to resemble the waves of hot coffee, which at night filters the artificial light creating a striking illuminated reticle that evokes the energy of MuMAC.

Material the Arkispazio use is reyonbond by Alcoa, that is the same metal composite as alucobond, they are both "a composite panel consisting of an extruded thermoplastic compound core that's fusion bonded between two sheets of coil-coated aluminum. The result is a highly corrosion-resistant, rigid-yet-flexible material that weighs 3.4 times less than steel and 1.6 times less than pure aluminum. Its extreme formability makes it ideal for curves and unique design accents." Façade of the museum is made of curvy slats of a four different heights, with 1.8 cm gaps between each one to let the light pass through. They were assembled by Metalcop Srl.

博物馆占地 1 800 m²，展示着咖啡文化的百年历史。建筑外墙选用红色的带状装饰，象征热咖啡飘动的热气，背景光的照射，让 Mumac 的标识更醒目。到晚上，人工灯光可以使其散发出引人注目的光芒。

项目采用两种材料 reyonbond 和 alucobond，它们都是由铝镀薄板压制热塑性材料而成的复合面板，具有高防腐性，刚柔并济，比纯钢和纯铝要轻的多，再加上极佳的成型性能，无疑是该曲线立面的首选材料。立面的弯曲面板，以四种不同的高度呈现，每个高度有异的连接处都有 1.8 cm 的空隙，引入阳光。

