

咖啡机博物馆

Museum of Coffee Machine

建筑师: Arkispazio

甲方: Gruppo Cimbali

总建筑师: Paolo Balzanelli, Valerio Cometti

参与设计建筑师: Karolina Kolodziej, Massimo Lapenna, Roberto Lamanna

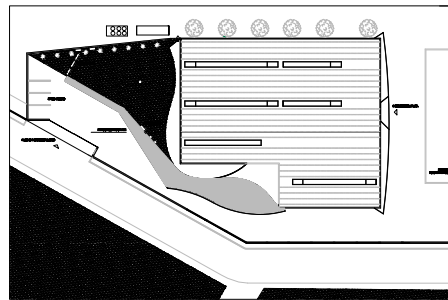
结构工程: Francesco Terreni

机电工程: Antonio Bozino

建筑面积: 1800 m²

开放时间: October 2012

摄影师: Angelo Margutti & Associati



总平面图
Site plan 1

咖啡机博物馆(MuMAC)是建筑师与 Valerio Cometti+V12设计事务所的创始人共同为金佰利集团的百年庆典设计而成的。通过其传奇品牌金佰利咖啡机和飞马咖啡机,金佰利集团成为世界上最重要、最专业的咖啡机制造厂商。

咖啡机博物馆坐落在金佰利集团内部,离米兰南部仅几英里远。这个新架构的核心建筑曾被用作仓库,现在,用于咖啡文化项目和展览的展厅以及多功能开放空间坐落于内。咖啡机博物馆讲述了一个长达百年的故事,1800m²的展厅将这些特殊物体的历

史娓娓道来。博物馆的前后两面均用技艺高超而精美的工艺手法诠释:由合成材料制成的“红色金佰利”条形标志营造出一种迂回的环绕感,其灵感源于咖啡升腾起的香气;夜晚,精心设计的照明便形成光彩夺目的背光网格线,用以唤起博物馆的活力。

参观者可以经新入口进入博物馆:咖啡色墙体清晰地标注出入口所在。咖啡色墙体限定了内部花园的空间,九棵树将花园划分成十个相等的展区:分别象征着金佰利集团在过去十个十年里的事迹及所取得的成就。

博物馆展区则将20世纪初到现在分成

6个历史时期进行展览,包括早期时代、理性主义时代、杠杆发明、标语设计、国际化空间以及千禧之年。名为早期时代展区的特色是吊顶和装饰艺术时代的海报。理性主义时代的展览包括朴素的法西斯主义柱廊和由精确的正交线网格所确定的大理石展台的布局。在致力于展现上世纪五六十年代文化特色的展区中,我们可以看到一个重建的吧台以及由全悬挑结构支撑起来的那个时代的机器。多亏了镜子的精巧摆放,参观者才能够尽情欣赏这些神奇机器的两面。标语设计时代的展厅以收集20世纪60年代晚期至70



- | | |
|-------------|--|
| 1 入口/接待处 | 1 Entrance/Reception |
| 2 咖啡吧 | 2 Espresso bar |
| 3 早期时代展厅 | 3 The early years |
| 4 理性主义时代展厅 | 4 The age of rationalism |
| 5 杠杆发明展厅 | 5 Invention of the lever |
| 6 标语设计展厅 | 6 Under banners of design |
| 7 国际化空间展厅 | 7 The international dimension |
| 8 千禧之年展厅的入口 | 8 Entrance to the new millennium |
| 9 新咖啡机的安装 | 9 Installation of the new coffee machine |
| 10 储藏室 | 10 Storage |
| 11 卫生间 | 11 Toilets |
| 12 文化区入口 | 12 Entrance of the culture area |
| 13 培训室 | 13 Training room |
| 14 临时展区 | 14 Temporary exhibition area |
| 15 杂物间 | 15 Utility room |
| 16 会议室 | 16 Conference room |
| 17 品尝室 | 17 Tasting room |

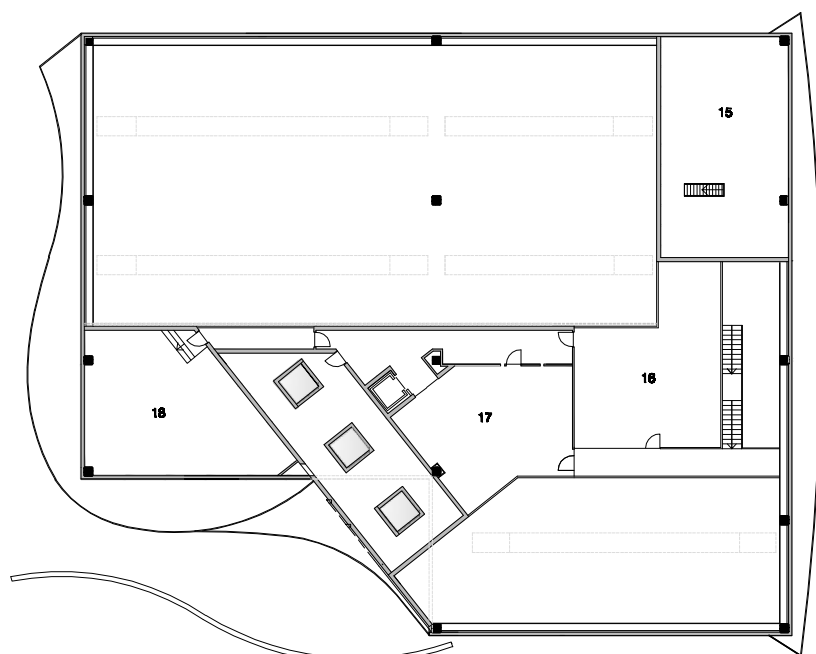


年代的设计杰作为特色:这些年来,咖啡机体现在大师们的设计作品之中,可以说,这些机器实际上就是设计符号。千禧之年展厅展台的涂层均为白色树脂,从同为白色树脂涂层的地板中顺利地脱颖而出:这个展区展出了因社会不断发展应运而生的最现代化的咖啡机。从博物馆的任何位置都可以看到展厅中那个从底到顶的红色空间,其内安装着由Valerio Cometti+V12设计的新款金佰利M100咖啡机:一张详细的分解图不仅使游客了解这台咖啡机的科技含量及复杂程度,而且成为他们回顾百年来咖啡机那段特殊成长历程的邀请函。

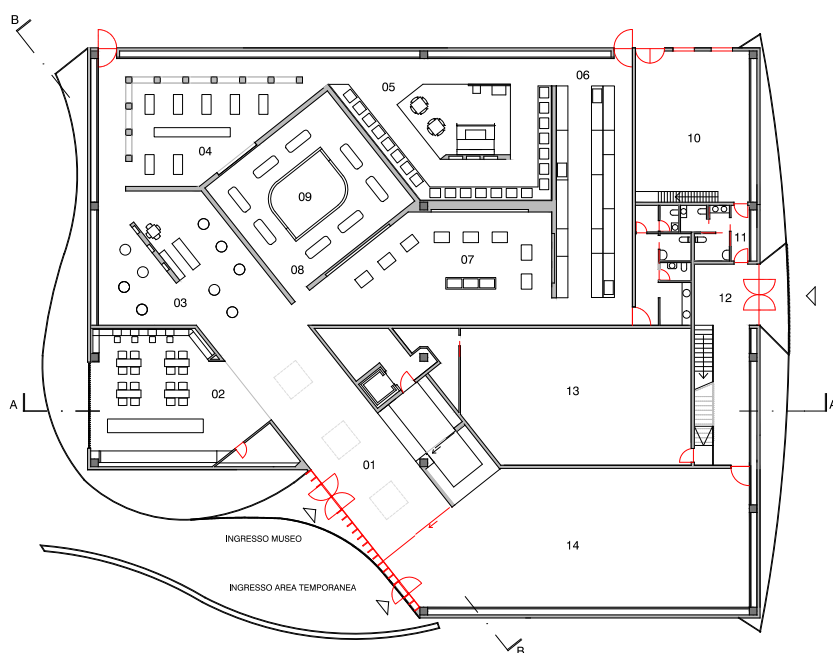
MuMAC, Museum of Coffee Machine, was designed by architects and the founder of Valerio Cometti+V12 Design in order to celebrate the 100th anniversary of Cimballi Group, the most important professional coffee machine manufacturer in the world, through its legendary brands LaCimballi and Faema.

MuMAC lies within the establishment of the Cimballi Group a few miles South of Milan. The core of the new architecture is a building previously used as a warehouse, within which are located both the exposition area and a versatile open space suitable for events and exhibitions to the culture of coffee. MuMAC narrates a story that spans across 100 years, recounting the history of these extraordinary objects within its 1,800 square meters. Both facades of the museum have been rendered with a delicate nonetheless technological technique: "LaCimballi red" slats of a composite material create a sinuous embrace that has been inspired by the flow of the aroma lifting off a coffee cup and at night a carefully designed illumination creates a strikingly backlit grid of light that evokes the energy living inside MuMAC.

Visitors of MuMAC, access via a new entrance: a coffee-colored wall identifies clearly such opening. The internal garden is limited by this coffee-colored wall that is marked by nine trees which divide it into 10 equal spaces.

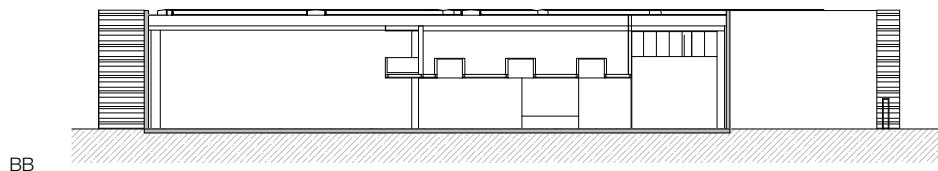
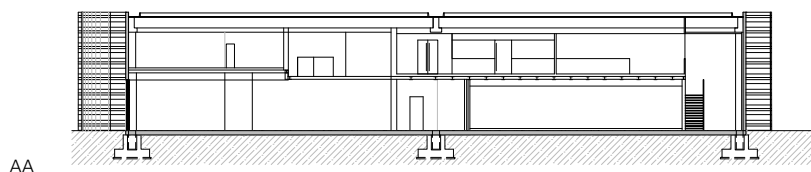


二层
First floor



一层
Ground floor

PIANTA PROGETTO PIANO TERRA
0 4 m 8 m 12 m



es: ten decades of the century that symbolize the life and the achievements of Cimbali Group.

The museum area offers an exposition divided into six historical periods from the beginning of the century to the present day: The early years, the age of Rationalism, Invention of the lever, Under the banners of design, The International dimension and The New Millennium. Area called the early years is characterized by a suspended ceiling and posters from Art Deco period. Exhibition of The age of Rationalism include a severe fascist colonnade and strict grid of orthogonal lines identifies the layout of the marble display stands.

In the area dedicated to the culture of the 50s and 60s we can find a reconstruction of a bar and an entirely cantilevered structure that supports the machines of the period where thanks to cleverly positioned mirrors, visitors can enjoy both sides of these wonderful machines. Under the banners of design is characterized by a collection of design masterpieces of the late '60s and '70s: great Masters of design have penned coffee machines in these decades, therefore these machine are actual design icons. The New Millennium is where the display stands are coated in white resin and they smoothly emerge from the floor equally coated in white resin: this area portrays the most modern machines, those designed for an increasingly fast society. This room has a full height red volume, which is visible from any angle of the museum. Within this volume is visible an installation of the new LaCimbali M100 coffee machine designed by Valerio Cometti+V12 Design: a daring exploded view that allows to grasp the technological content and the level of complexity of such machine, becoming an invitation to reflect on the extraordinary journey that the coffee machine has made during these last hundred years.

